



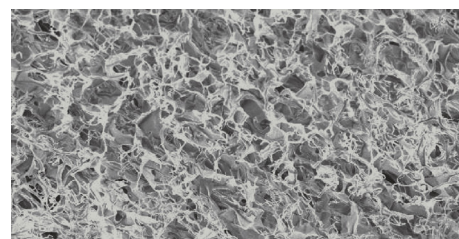
# ologen<sup>TM</sup>

## Biodegradable Collagen Matrix

### About ologen<sup>TM</sup> Collagen Matrix

ologen<sup>TM</sup> Collagen Matrix (ologen<sup>TM</sup> CM) is an advanced wound care device composed of a porous matrix of cross-linked atelocollagen and glycosaminoglycan (GAG).

ologen<sup>TM</sup> CM is specifically designed to promote scar-free wound healing by guiding fibroblast ingrowth in a wide range of ophthalmic surgeries, for example to create a prominent healthy vascular bleb in glaucoma surgery.



### Device description

- Type I atelocollagen with a 3D porous structure and pore diameter between 10-300  $\mu\text{m}$
- Comprises > 90% atelocollagen and < 10% glycosaminoglycan (GAG)
- Human disease free
- Sterile 5 years shelf life
- Dry form scaffold; stores at room temperature
- Biodegraded in approximately 3 to 6 months

Can be used with any Glaucoma Drainage Device: Ahmed Glaucoma Valve (AGV), Baerveldt Glaucoma Implant, Molteno<sup>®</sup> Glaucoma Implant



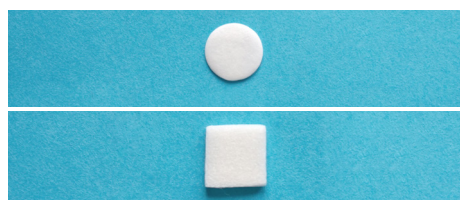
*Adapted from New World Medical, Inc.*

### Product specification

#### Product shape

#### Model number

#### Size



862051

12.0 mm (D) x 1.0 mm (H)

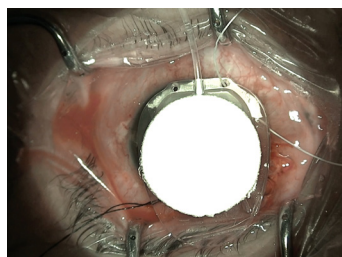
870051

10.0 mm (W) x 10.0 mm (L) x 2.0 mm (H)

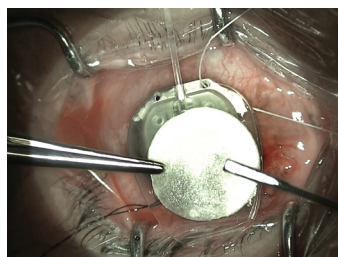
## Glaucoma drainage device implantation in combination with ologen™ CM

### Method A

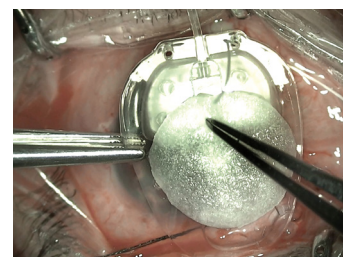
ologen™ CM, when slightly wet, adheres to the plate of the Ahmed Glaucoma Valve.



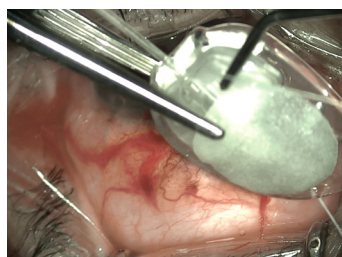
Position the ologen™ CM on top of the plate of the Ahmed Glaucoma Valve (AGV).



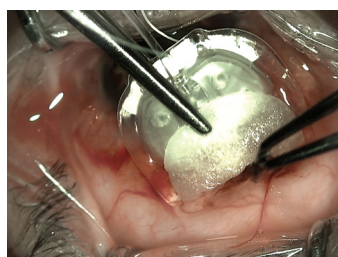
Wet the ologen™ CM with a few drops of sterile solution. The ologen™ CM becomes sticky and adheres to the AGV.



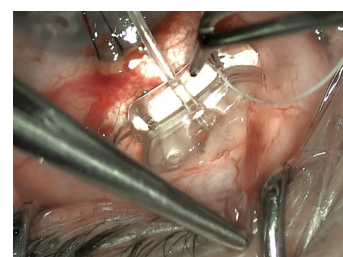
ologen™ CM does not move and stays put on the plate.



Carefully grab the ologen™ CM-covered AGV.



Place the ologen™ CM-covered AGV into the sub-tenon's space.

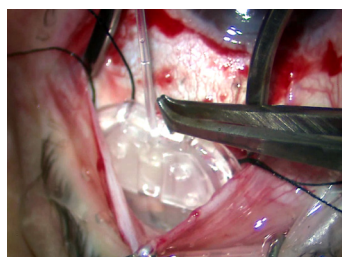


The ologen™ CM stays in place. Finish the surgery as you would normally do.

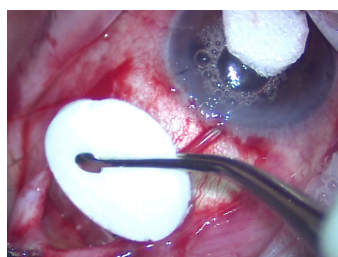
*Surgery by Dr. Vejarano*

### Method B

ologen™ CM is positioned on top of the Ahmed Glaucoma Valve, that is already in the sub-tenon's space.

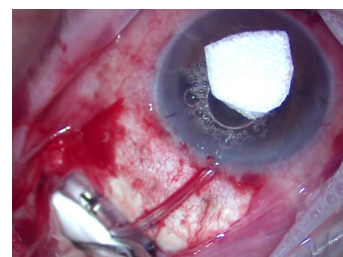


Place the AGV into the sub-tenon's space.



Position the ologen™ CM on top of the AGV. \*

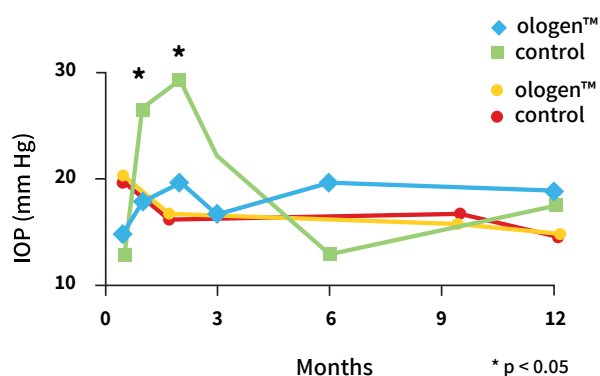
\* This method can also be used with the square ologen™ CM (870051)



The ologen™ CM is on top of the AGV. Finish the surgery as you would normally do.

*Surgery by Prof. Dr. Akira*

## Results and mechanism of action



ologen™ CM, by mediating the formation of a dense and porous fibrous tissue, minimizes the formation of a thick capsule around the Ahmed Glaucoma Valve plate. In this way, the intra-ocular pressure during the early post-operative period is significantly reduced.

*Adapted from Yadgarov, A., et. al. American Glaucoma Society, 2017*

The use of ologen™ CM associated with Ahmed Glaucoma Valve appears to be safe but does not help decrease IOP, number of glaucoma medications or survival rate at 12 months.

*Adapted from Ibáñez, M. S. et. al. World Glaucoma Congress, 2017*