

RODENSTOCK Instruments



Making analysis
fashionable

RSL 2100/ RSL 2600/digital

Slit Lamps

R RODENSTOCK

The RSL 2100/ RSL 2600/digital: Tune up your business



” The RSL 2600digital with its excellent configuration is a powerful tool that makes my work easier. From the cornea to the retina – the eye examination is done straightforward.

What are your benefits?



Ideal value for your money

High-performance – affordable for everyone



Excellent quality

Crystal-clear HD optical system with resolution up to 200 lp/mm (2,700 N lp/mm)



Easy to operate

Due to the user-friendly construction and software



Expertise

Offer precise patient education thanks to image and video analysis (an upgrade kit is available for RSL 2100)



Fully equipped

Including built-in yellow filter



Connectivity

Ready for connection to PRO 500 and PRO 1000/EVO

A smart selection
to suit your needs.

The RSL 2600

HS-type



Illumination system

- Long-life economical LED lamp
 - High illumination intensity
 - Natural colour temperature
 - Inclined (RSL 2600 only)
- Optimal observation and analysis of cornea and retina

HD optical system with 5-step magnification

- Resolution up to 200 lp/mm (2,700 N lp/mm)
 - Magnification 6x, 10x, 16x, 25x, 40x
- View every detail of the various structures

All-encompassing filter range magnification

- Including built-in yellow filter
- Red-free, neutral density, Cobalt blue, heat-absorbing filter
- Diffuser

The RSL 2100

Z-type



Digital imaging system

Complete solution



The RSL 2600digital

The digital imaging system includes:

- Digital camera system
- Beam-splitter
- USB cable
- Background illumination module (RSL 2600digital only)

Upgrade with the digital imaging system



The RSL 2100

- Infrared illumination for Meibomian glands observation (RSL 2600digital only)
- Eyeview software
- Compatible with Windows OS
- HDMI output for external monitor

Features

Performance

- Wide dynamic range
- Meibomian glands examination
- Auto exposure
- Auto gain
- Auto white balance
- Auto OD/OS indicator

Software

Convenient patient management

- Edit, record, search for information
- Manage, import, export data

Functional analysis of images and videos

- Change brightness and contrast
- Zoom function

Compare several images at once

- Follow-up examination
- Lens fitting assistance for fluorescein images

Customisation based on individual needs

- Auto-exposure values
- Print report

Optional equipment



TAT-80R Applanation Tonometer

- Gold standard in IOP measurement
- Best reproducibility and accuracy
- Reliable and durable

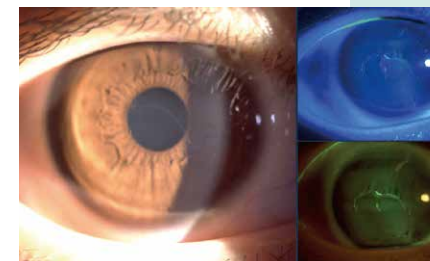
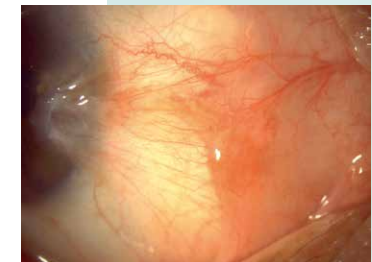
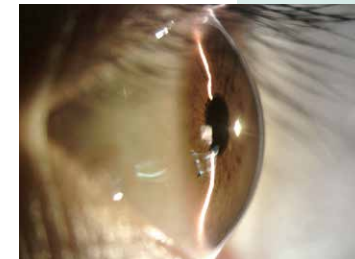
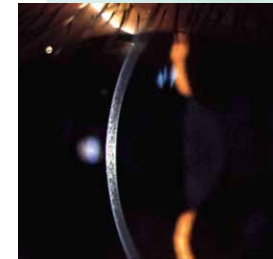
Metal Plate Table Kit

- For fast and easy table mounting
- Perfect fit



Measuring eyepiece

- With a reticle inside
- Convenient measurement of pathologies
- For more accurate diagnosis



Specifications

	RSL 2100/RSL 2100 + DIGITAL UPGRADE KIT	RSL 2600/RSL 2600DIGITAL
OPTICAL SYSTEM		
Type	Galilean converging binoculars 10°	Galilean converging binoculars 10°
Magnification	5-step rotating drum change 6x, 10x, 16x, 25x, 40x	5-step rotating drum change 6x, 10x, 16x, 25x, 40x
Eyepiece	12.5x	12.5x
Field of view	36.2, 22.3, 14, 8.9, 5.7 mm	36.2, 22.3, 14, 8.9, 5.7 mm
Interpupillary distance	52 to 80 mm	52 to 80 mm
Dioptre adjustment	-8 D to +8 D	-8 D to +8 D
SLIT PROJECTION AND BASE		
Slit width	0-14 mm continuously variable	0-14 mm continuously variable
Slit length	1-14 mm continuously variable	1-14 mm continuously variable
Aperture diameters	0.2, 3.5, 8, 14 mm	0.2, 1, 2, 3, 5, 10, 14 mm
Filters	Yellow, red-free, neutral density, blue, IR heat-absorbing filter, diffuser	Yellow, red-free, neutral density, blue, IR heat-absorbing filter, diffuser
Slit angle	0° to 180°	0° to 180°
Slit inclination	n.a.	5°, 10°, 15°, 20°
Base travel	30 mm Z-axis, 115 mm X-axis, 110 mm Y-axis	30 mm Z-axis, 115 mm X-axis, 110 mm Y-axis
Chin rest vertical movement	80 mm	80 mm
Horizontal fine adjustment	12 mm	12 mm
Fixation lamp	Red LED	Red LED
Light source	White LED	White LED
Luminance	≥150 klx	≥150 klx
DIMENSIONS AND WEIGHT		
Dimensions WDH	330 × 390-460 × 460 mm	330 × 390-460 × 650 mm
Weight	16 kg	17 kg
POWER SUPPLY		
Power supply input	100 – 240 V, 50/60 Hz	100 – 240 V, 50/60 Hz
Power supply output	12 – 15 V DC	12 – 15 V DC

	RSL 2100 + DIGITAL UPGRADE KIT RSL 2600DIGITAL
CAMERA SYSTEM	
Resolution	5 MP/2592 × 1944
Connectivity	USB 3.0
Photo format	JPEG
Video format	MP4 H.264
Chip size	1/1.8"
Frame rate	25 fps

RODENSTOCK Instruments
 Wiesbadener Strasse 21
 90427 Nürnberg, Germany
 Phone +49 (0)911 938 546 2777
 Fax +49 (0)911 938 546 220
 info@rodenstock-instruments.de
 www.rodenstock-instruments.de



Rodenstock Instruments is a
 business unit of Tomey GmbH