

The concept of Sophi is based on 3 pillars:

Mobility

Sophi A offers the surgical team high flexibility. The wireless foot pedal comes with the "Easy Move" function, which enables moving the foot pedal over the floor like a hovercraft. In addition, the compressor for vitrectomy is integrated into the device.

Simplicity

Sophi's design is simple and straightforward. The complexity is inside the device, which allows for simple user handling, helps to save time and increases productivity.

Safety

Sophi opens up new avenues in hygiene and safety. The automated Cassette Slot-In System reduces the risk of contamination. The IOP Control Pump is designed for high chamber stability.

Efficiency

Altogether, the benefits of Sophi's 3-Pillar-Concept facilitate simpler, safer and faster operating procedures – before, during and after surgery. This significantly increases efficiency and therefore also yields economic benefits.

This
Think in System

Rev.: 1801-8300-001-02

This AG
Widnauerstrasse 1
9435 Heerbrugg, Switzerland
T: +41 71 544 08 70
info@thisag.ch
www.thisag.ch

www.sophi.info

sophi swiss
ophthalmology
innovation

Sophi A

The Sophi family is growing.



Please note: „Sophi A“ device is not yet approved. It has been submitted for EU-market (CE) approval but cannot be purchased until approval has been granted.

Still Sophi, just smaller.

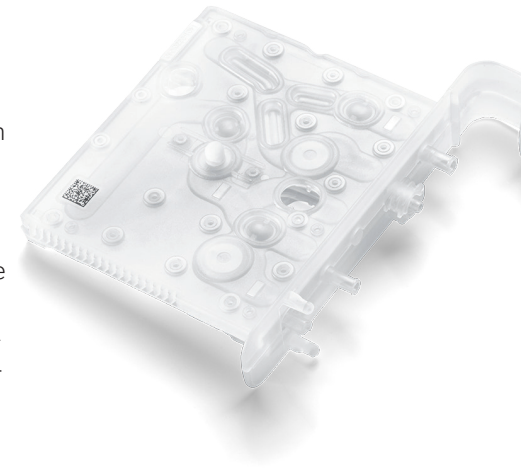
Sophi A - The letter "A" stands for Anterior and provides you with the necessary features for anterior segment surgery. The already established functions of the Sophi family such as the Peristaltic Pump, active IOP Control Pump, Efficient Sinus Phaco, vitrectomy and diathermy have been integrated into the device. With Sophi A you can expect high-end performance in a smaller version.



Active IOP Control Pump

Instead of gravity infusion, Sophi comes with an active IOP Control Pump. Thanks to this additional peristaltic pump, Sophi controls both the flow and pressure of irrigation.

As the device is not only "aware" of the pressure and flow, but also of the tubing system and instruments, the infusion pressure at the instrument tip remains stable in the anterior chamber of the eye. Thanks to the rapid response time, Sophi can also be operated in the Occlusion Mode.



Easy Move foot pedal

Sophi is activated and controlled by the wireless foot pedal. The dual linear deflections and the four switches are individual and easily programmable.

The foot pedal comes with integrated LED lighting, which enables you to accurately move the foot pedal under the surgical table. You can move the foot pedal over the floor like a hovercraft.

Video over Wi-Fi

Sophi also assists with communication between surgeon and assistant. The microscope video signal is transmitted wirelessly to the display, which enables the assistant to follow the surgeon's work in real time. Therefore, the assistant is kept informed throughout the surgery, and is more mobile, because looking through the microscope is unnecessary.

